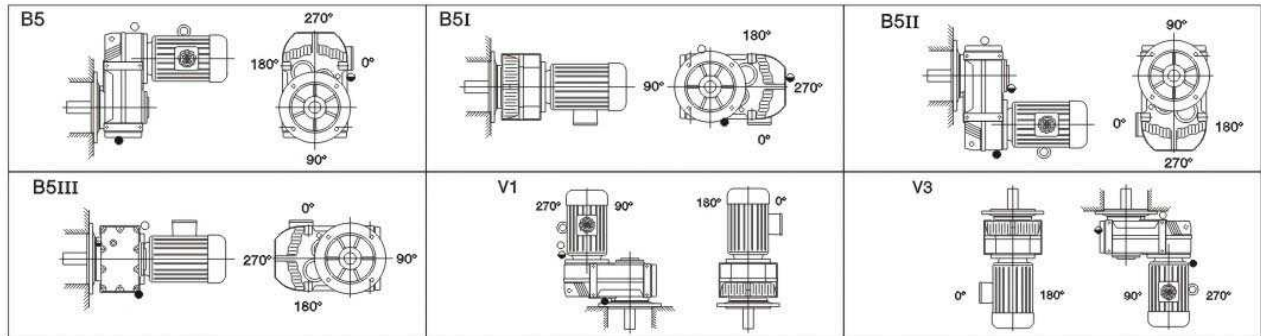


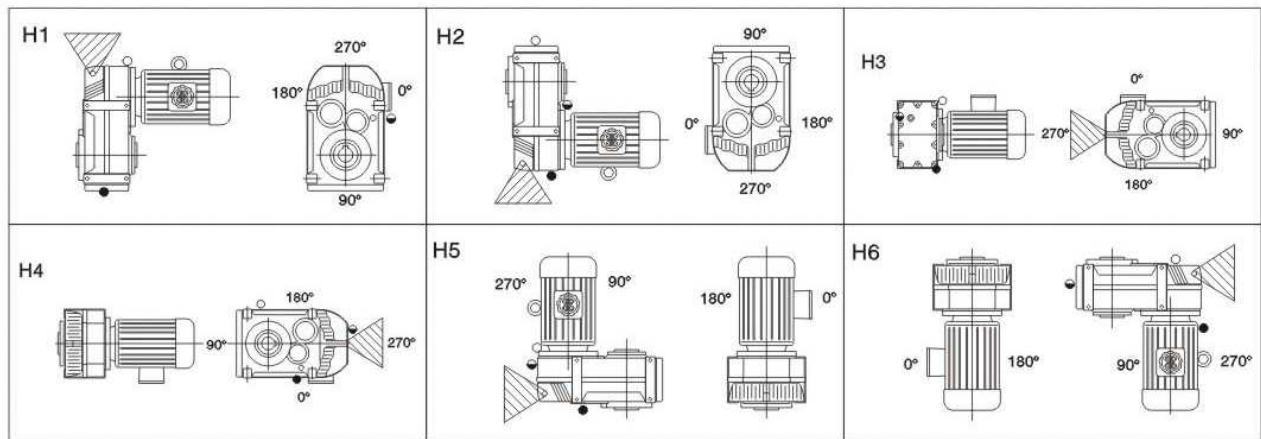


**安装形式 Install the form DFF37-DFF157型 DFF37-DFF157 type**



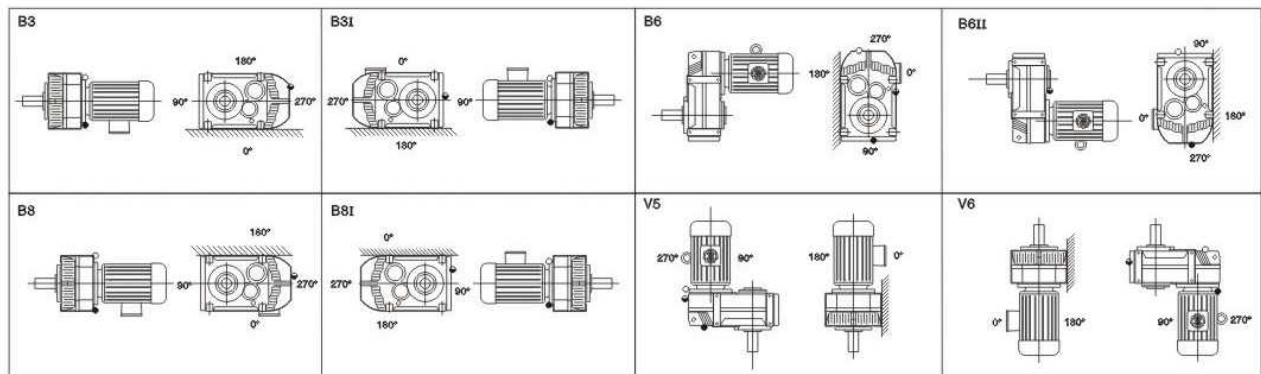
**DFA37-DFA157型, DFAF37-DFAF157型 DFA37-DFF157, DFAF37-DFAF157 TYPE**

DF



注: ●—表示放油孔 ◐—表示油镜 ○—表示加油通气孔  
Notes: ●— It denotes exhaust outlet ◐— It denotes oil mirror ○— It denotes filler air vent

**安装形式 Install the form DF型 DF type**



注: ●—表示放油孔 ◐—表示油镜 ○—表示加油通气孔  
Notes: ●— It denotes exhaust outlet ◐— It denotes oil mirror ○— It denotes filler air vent



**DF系列传动功能表 DF SERIES TRANSMISSION CAPACITY TABLE**

n 1 (r/min)	n 2 (r/min)	i	DF37			DF47			DF57			DF67			DF77			DF87		
			最大允许直联电机3kw Maximum power of directly connected motor 3kw			最大允许直联电机3kw Maximum power of directly connected motor 3kw			最大允许直联电机5.5kw Maximum power of directly connected motor 5.5kw			最大允许直联电机5.5kw Maximum power of directly connected motor 5.5kw			最大允许直联电机11kw Maximum power of directly connected motor 11kw			最大允许直联电机22kw Maximum power of directly connected motor 22kw		
			MN2 (N.m)	ieX	PN1 (Kw)	MN2 (N.m)	ieX	PN1 (Kw)	MN2 (N.m)	ieX	PN1 (Kw)	MN2 (N.m)	ieX	PN1 (Kw)	MN2 (N.m)	ieX	PN1 (Kw)	MN2 (N.m)	ieX	PN1 (Kw)
1450	337	4.3	92	4.28	*2.64	265	4.34	*3.50				465	4.38	*6.60	840	4.18	*13.2	1200	4.41	*26.4
	280	5.2	100	5.09	*2.64	280	5.21	*3.50	178	5.18	5.5	490	5.22	*6.60	900	5.17	*13.2	1275	5.25	*26.4
	252	5.8	104	5.58	*2.64	290	5.92	*3.50	205	8.98	5.5	505	5.93	*6.60	900	5.76	*13.2	1275	5.85	*26.4
	219	6.6	113	6.45	2.64	315	6.57	*3.50	226	6.58	5.5	515	6.58	*6.60	900	6.65	*13.2	1275	6.75	*26.4
	195	7.4	117	7.50	2.36	315	7.36	*3.50	193	7.73	4	505	7.37	*6.60	900	7.40	*13.2	1275	7.51	*25.72
	174	8.3	121	8.34	2.20	275	8.25	*3.50	204	8.19	4	475	8.30	*6.60	900	8.28	*13.2	1275	8.40	23.00
	160	9.1	146	8.89	2.49	330	9.00	*3.50	232	9.31	4	680	9.04	*6.60	1250	8.84	*13.2	2400	9.32	*26.4
	134	10.8	154	10.58	2.21	330	10.80	*3.50	265	10.64	4	680	10.80	*6.60	1250	10.94	*13.2	2500	11.00	*26.4
	117	12.4	158	12.15	1.97	330	12.26	*3.50	306	12.29	4	680	12.25	*6.60	1250	12.18	*13.2	2500	12.29	*26.4
	105	13.8	166	13.39	1.88	330	13.61	*3.50	337	13.52	4	680	13.63	*6.60	1250	14.05	*13.2	2500	14.16	*26.4
	94	15.5	166	15.58	1.61	330	15.24	3.28	396	15.88	4	680	15.23	*6.60	1250	15.64	12.11	2500	15.75	24.05
	83	17.4	166	17.33	1.45	330	17.10	2.92	419	16.81	4	680	17.13	6.01	1250	17.51	10.82	2500	17.61	21.5
	74	19.5	166	19.46	1.29	330	19.41	2.58	477	19.11	4	680	19.41	*4.80	1250	19.72	9.60	2500	19.88	19.0
	69	21.1	166	20.64	1.22	330	21.26	2.35	528	21.17	4	680	21.28	*3.50	1250	21.42	8.84	2500	21.58	17.5
57	25.3	166	24.98	*0.66	330	25.31	*1.32	473	24.96	3	680	25.31	*1.93	1250	25.50	*6.60	2500	25.68	*13.2	
1450	51	28.2	166	27.79	0.91	330	28.14	1.78	420	30.22	2.2	680	28.35	3.47	1250	28.51	6.64	2090	27.91	11.3
	43	34.0	166	34.25	0.73	330	33.49	1.49	499	35.87	2.2	680	33.87	3.04	1250	34.00	5.57	2175	34.45	9.57
	38	38.3	166	38.23	0.66	330	38.48	1.30	533	38.3	2.2	680	38.43	2.68	1250	38.60	4.91	2265	38.47	8.92
	33	43.6	166	42.87	0.59	330	42.39	1.18	431	44.84	1.5	680	42.75	2.41	1250	42.85	4.42	2340	44.32	8.00
	29.8	48.7	166	48.35	0.52	330	49.34	1.01	483	50.22	1.5	680	47.78	2.16	1250	47.99	3.95	2340	49.30	7.19
	26.6	54.5	166	54.93	0.46	330	54.92	0.91			1.5	680	53.73	1.92	1250	53.93	3.51	2340	55.14	6.43
	24.0	60.5	166	60.08	0.42	330	59.72	0.84	417	59.1	1.1	680	59.72	1.73	1250	60.44	3.13	2500	60.84	6.23
	21.4	67.8	166	67.05	0.38	330	66.61	0.73	482	68.38	1.1	680	67.76	1.52	1250	68.63	2.76	2500	67.92	5.58
	18.8	77.0	166	75.19	0.33	330	75.60	0.66	354	73.16	0.75	680	75.37	1.37	1250	76.19	2.49	2500	78.25	4.84
	16.8	86.1	166	84.81	0.30	330	87.99	0.57	296	83.46	0.55	680	84.24	1.22	1250	85.26	2.22	2500	87.03	4.35
	15.0	96.4	166	96.35	0.26	330	97.84	0.51	391	110.01	0.55	680	94.72	1.09	1250	96.02	1.97	2500	97.34	3.89
	13.6	107	166	103.0	0.24	330	109.9	0.45	304	127.27	0.37	680	107.3	0.96	1250	108.6	1.74	2500	109.7	3.45
	12.3	118	166	118.8	0.21	330	116.6	0.43	325	136.16	0.37	680	117.7	0.88	1250	119.0	1.59	2500	119.2	3.18
	10.3	141	166	138.7	0.18	330	141.0	0.35	375	157.09	0.37	680	140.0	0.74	1250	141.7	1.34	2500	141.9	2.67
9.0	161				330	163.0	0.31	439	183.6	0.37	680	159.0	0.65	1250	165.0	1.15	2500	159.9	2.37	
8.4	173				330	175.7	0.28				680	170.2	0.61	1250	174.7	1.08	2500	175.3	2.16	
7.3	198										680	197.0	*0.48	1250	197.7	0.96	2500	193.3	1.96	
6.4	227																			
6.0	241																			
5.3	273																			
960	9.0	107	166	103.0	0.16															
	8.1	118	166	118.8	0.14	330	116.6	0.28												
	6.8	141	166	138.7	0.12	330	141.0	0.23				680	140.0	0.49						
	6.0	161				330	163.0	0.20				680	159.0	0.43	1250	165.0	0.76			
	5.5	173				330	175.7	0.18				680	170.2	0.40	1250	174.7	0.71	2500	175.3	1.42
	4.8	198										680	197.0	0.32	1250	197.7	0.63	2500	193.3	1.29
	4.2	227													1250	226.3	*0.31			
	4.0	241													1250	243.5	*0.21			
3.5	273																			
710	4.4	161										680	159.0	0.32						
	4.1	173										680	170.2	0.30						
	3.6	198																		
	3.1	227																		
	2.9	241																		
2.6	273																			

DF

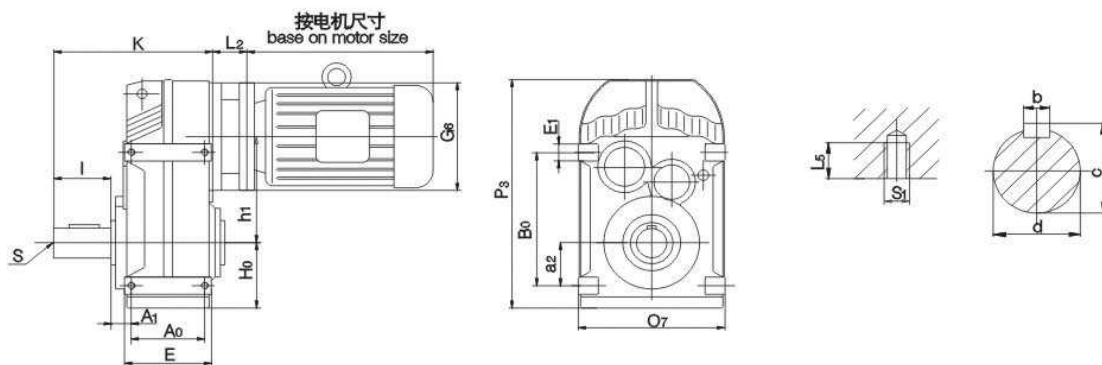




**DF系列传动功能表 DF Series transmission capacity table**

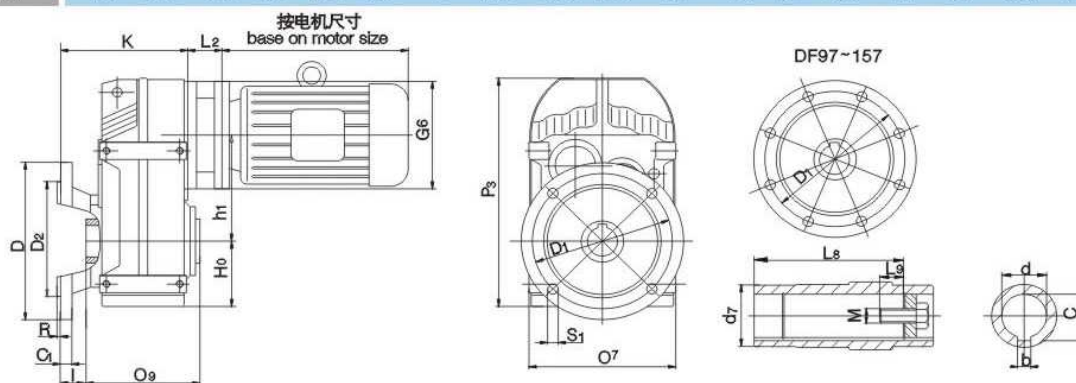
n 1 (r/min)	n 2 (r/min)	i N	DF97 最大允许直联电机30kw Maximum power of directly connected motor 30kw			DF107 最大允许直联电机45kw Maximum power of directly connected motor 45kw			DF127 最大允许直联电机90kw Maximum power of directly connected motor 90kw			DF157 最大允许直联电机160kw Maximum power of directly connected motor 160kw		
			MN2 (N.m)	iex	PN1 (Kw)	MN2 (N.m)	iex	PN1 (Kw)	MN2 (N.m)	iex	PN1 (Kw)	MN2 (N.m)	iex	PN1 (Kw)
			337	4.3	1660	4.20	*32.6	3730	4.35	*48.5	4950	4.29	*97.0	
280	5.2	1780	5.20	*32.6	3850	5.19	*48.5	4950	5.17	*97.0				
252	5.8	1860	5.79	*32.6	3850	5.87	*48.5	4950	5.76	*97.0				
219	6.6	1950	6.68	*32.6	4000	6.76	*48.5	4950	6.65	*97.0				
195	7.4	1950	7.43	*32.6	4110	7.49	*48.5	5730	7.40	*97.0				
174	8.3	1950	8.32	*32.6	4200	8.33	*48.5	5730	8.28	*79.5				
160	9.1	3400	8.90	*32.6	5330	9.19	*48.5	7820	9.13	*97.0	12500	9.10	208	
1450	134	10.8	3580	11.01	*32.6	5760	10.96	*48.5	8260	11.01	*97.0	13390	10.94	185
117	12.4	3580	12.27	*32.6	6260	12.38	*48.5	9130	12.27	*97.0	13390	12.66	160	
105	13.8	3580	14.15	*32.6	6400	14.26	*48.5	9130	14.15	*97.0	13390	14.01	145	
94	15.5	3580	15.75	*32.6	6400	15.81	*48.5	9130	15.75	87.8	13390	15.59	130	
83	17.4	3580	17.63	30.8	6400	17.57	*48.5	9130	17.63	78.4	14280	17.36	124	
74	19.5	3580	19.86	27.3	6400	19.69	*48.5	10000	19.86	76.3	13390	19.20	105	
69	21.1	3580	21.57	25.1	6400	21.57	*39.5	10000	21.57	*48.5	14280	21.36	101	
57	25.3	3580	25.68	21.1	6400	25.68	*26.4	7040	25.68	41.5	12500	25.41	74.5	
51	28.2	3580	28.80	18.8	6400	27.49	35.3	10000	28.87	52.5	15000	28.01	81.1	
43	34.0	3580	34.39	15.8	6400	33.93	28.6	10000	34.43	44.0	15000	33.76	67.3	
38	38.3	3580	38.40	14.1	6400	37.89	25.6	10000	38.91	38.9	15000	37.71	60.3	
33	43.6	3580	44.25	12.2	6400	43.66	22.2	10000	44.83	33.8	15000	43.44	52.3	
29.8	48.7	3580	49.21	11.0	6400	48.56	20.0	10000	49.67	30.5	15000	48.32	47.0	
26.6	54.5	3580	55.04	9.86	6400	54.31	17.8	10000	55.29	27.4	15000	54.04	42.0	
24.0	60.5	3580	60.81	8.92	6260	61.21	15.5	10000	60.25	25.1	15000	59.90	37.9	
21.4	67.8	3580	67.92	7.99	6260	68.36	13.9	10000	68.22	22.2	15000	66.90	34.0	
18.8	77.0	3580	78.25	6.93	6400	78.76	12.3	10000	78.46	19.3	15000	77.07	29.5	
16.8	86.1	3580	87.03	6.23	6400	87.60	11.1	10000	86.91	17.4	15000	85.72	26.5	
15.0	96.4	3580	97.34	5.57	6400	97.98	9.90	10000	96.76	15.7	15000	95.88	23.7	
13.6	107	3580	109.6	4.95	6400	110.3	8.79	10000	108.4	14.0	15000	108.0	21.0	
12.3	118	3580	119.3	4.55	6400	120.1	8.08	10000	118.7	12.7	15000	117.5	19.3	
10.3	141	3580	141.9	3.82	6400	142.8	6.79	10000	141.2	10.7	15000	139.8	16.2	
9.0	161	3580	160.0	3.39	6400	161.1	6.02	10000	159.2	9.51	15000	157.6	14.4	
8.4	173	3580	175.3	3.09	6400	176.5	5.49	10000	174.5	8.68	15000	172.7	13.1	
7.3	198	3580	203.5	2.67	6400	204.9	4.73	10000	202.6	7.48	15000	190.4	11.9	
6.4	227													
6.0	241													
5.3	273													
9.0	107													
8.1	118													
6.8	141										15000	139.8	10.7	
6.0	161	3580	160.0	2.24							15000	157.6	9.52	
960	5.5	173	3580	175.3	2.04	6400	176.5	3.62	10000	174.5	5.73	15000	172.7	8.68
4.8	198	3580	203.5	1.76	6400	204.9	3.12	10000	202.6	4.93	15000	190.4	7.88	
4.2	227													
4.0	241													
3.5	273													
4.4	161										15000	157.6	7.03	
710	4.1	173	3580	175.3	1.51						15000	172.7	6.41	
3.6	198	3580	203.5	1.30	6400	204.9	2.30	10000	202.6	3.64	15000	190.4	5.82	
3.1	337													
2.9	241													
2.6	273													



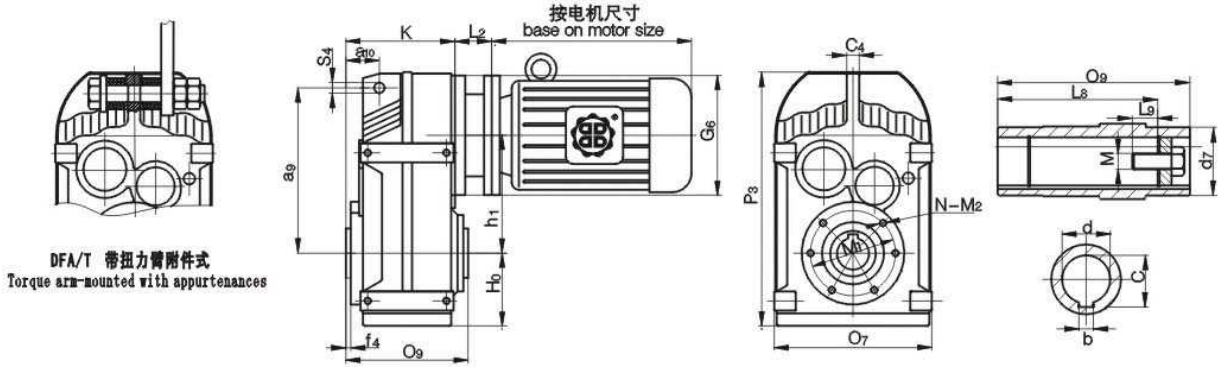


型号 Type	安装尺寸 Installation Size							轴伸尺寸 Stalk Size							外型尺寸 Features Size						
	a <sub>2</sub>	A <sub>0</sub>	B <sub>0</sub>	E	S	A <sub>1</sub>	L <sub>5</sub>	S <sub>1</sub>	H <sub>0</sub>	I	d(kg)	c	b	G <sub>6</sub>	h <sub>1</sub>	E <sub>1</sub>	O <sub>7</sub>	p <sub>2</sub>	K		
DF 37	31	77	115	95	M10	26.5	11	M8	71	50	25	28	8	120	112	20	165	247	166		
DF 47	43	93	145	109	M12	34	15	M10	77	60	35	38	10	120	128.1	20	180	268	200		
DF 57	55	102	170	126	M12	34.5	17	M12	93	70	35	38	10	160	136	25	200	317	221		
DF 67	60	112	190	131	M16	39	17	M12	97	80	40	43	12	160	159.5	25	212	343	245		
DF 77	70	140	240	165	M16	40	26	M16	116	100	50	53.5	14	200	200	35	270	420	297		
DF 87	100	165	310	195	M20	42.5	26	M16	146	120	60	64	18	250	246.7	40	330	525	345.5		
DF 97	120	205	350	240	M20	52.5	28	M20	176	140	70	74.5	20	300	285	44	400	621	417		
DF 107	125	220	400	260	M24	72	36	M24	199	170	90	95	25	350	332.4	60	450	716	486.5		
DF 127	142	270	450	316	M24	70	45	M30	235	210	100	106	28	450	382.6	70	530	853	579		
DF 157	170	310	540	364	M24	95	45	M36	288	210	120	127	32	550	447	80	660	1020	653		

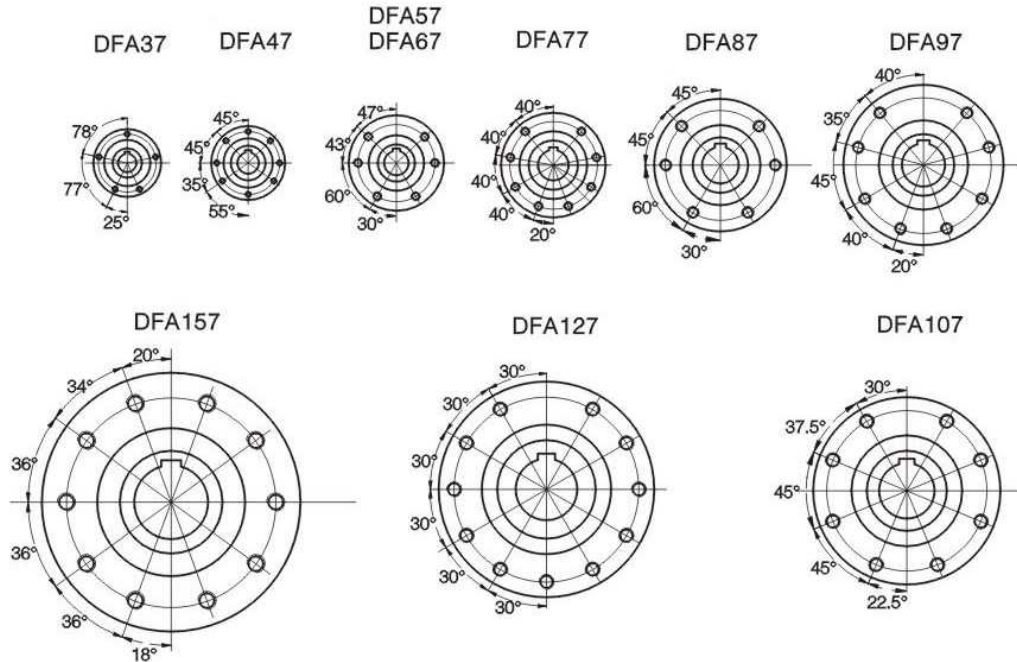
DF



型号 Type	安装尺寸 Installation Size							轴伸尺寸 Stalk Size							外型尺寸 Features Size						
	H <sub>0</sub>	S <sub>1</sub>	D <sub>2</sub> (h7)	L <sub>8</sub>	L <sub>9</sub>	D <sub>1</sub>	R	M	d(H7)	C	b	I	O <sub>7</sub>	O <sub>8</sub>	p <sub>2</sub>	D	C <sub>1</sub>	K	G <sub>6</sub>	h <sub>1</sub>	d <sub>7</sub>
DFAF 37	71	9	110	103	17	130	3.5	M10	30	33.3	8	24	165	120	247	160	10	135	120	112	45
DFAF 47	77	11	130	128	22	165	3.5	M12	35	38.3	10	25	180	150	268	200	12	160	120	128.1	50
DFAF 57	93	13.5	180	142	25	215	4	M12	40	43.3	12	27.5	200	169	317	250	15	177	160	136	55
DFAF 67	97	13.5	180	146	29	215	4	M16	40	43.3	12	23	212	180	343	250	15	183	160	159.5	55
DFAF 77	116	13.5	230	176	32	265	4	M16	50	53.8	14	40	270	210	420	300	16	232	200	200	70
DFAF 87	146	17.5	250	200	34	300	5	M20	60	64.4	18	30	330	240	525	350	18	250.5	250	246.7	85
DFAF 97	176	17.5	350	260	36	400	5	M20	70	74.9	20	41.5	400	300	621	450	22	313.5	300	285	95
DFAF 107	199	17.5	350	306	40	400	5	M24	90	95.4	25	41	450	350	716	450	22	352.5	350	332.4	120
DFAF 127	235	17.5	450	365	40	500	5	M24	100	106.4	28	51	530	410	853	550	25	420	450	382.6	140
DFAF 157	288	22	550	456	40	600	6	M24	120	127.4	32	60	660	500	1020	660	28	505	550	447	160

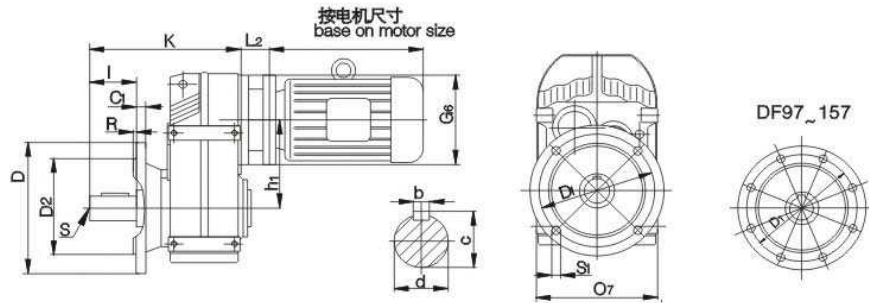


DF



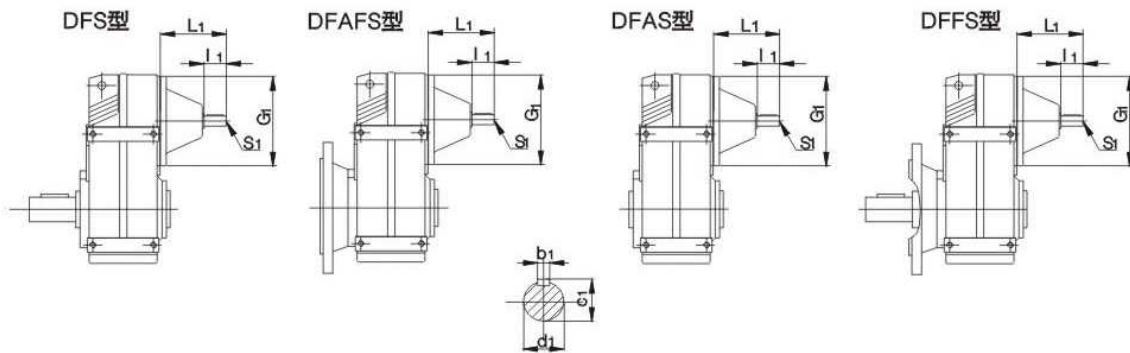
型号 Type	安装尺寸 Installion Size							轴伸尺寸 Stalk Size					外型尺寸 Features Size									
	a10	f4	c4	a9	H0	L9	S4	M	Ls	d(H7)	C	b	K	d7	O9	ps	O7	h1	G6	N	M1	M2
DFA 37	32	2	12	158	71	17	14	M10	103	30	33.3	8	111	45	120	247	165	112	120	5	94	M8
DFA 47	32.5	2	14	170	77	22	14	M12	128	35	38.3	10	135	50	150	268	180	128.1	120	8	102	M8
DFA 57	40.5	3	14	198	93	25	14	M12	142	40	43.3	12	150	55	166	317	200	136	160	6	125	M12
DFA 67	41	2	16	218	97	29	14	M16	146	40	43.3	12	160	55	180	343	212	159.5	160	6	125	M12
DFA 77	50	2	20	278	116	32	22	M16	176	50	53.8	14	192	70	210	420	270	200	200	8	142	M12
DFA 87	62	2	26	346	146	34	22	M20	200	60	64.4	18	220.5	85	240	525	330	246.7	250	6	178	M16
DFA 97	70	2	30	395	176	36	26	M20	260	70	74.9	20	272	95	300	621	400	285	300	8	220	M16
DFA 107	87.5	2	36	485	199	40	26	M24	306	90	95.4	25	311.5	120	350	716	450	332.4	350	8	260	M20
DFA 127	110	4	40	550	235	40	33	M24	365	100	106.4	28	369	140	410	853	530	382.6	450	11	300	M20
DFA 157	150	5	45	660	288	40	33	M24	456	120	127.4	32	443	160	500	1020	660	447	550	10	340	M24





型号 Type	安装尺寸 Installation Size				轴伸尺寸 Stalk Size				外型尺寸 Features Size				
	D <sub>1</sub>	D <sub>2</sub> (h <sub>7</sub> )	R	S <sub>1</sub>	S	C	b	d(ke)	l	D	C <sub>1</sub>	h <sub>1</sub>	K
DFF 37	130	110	3.5	9	M10	28	8	25	50	160	10	112	185
DFF 47	165	130	3.5	11	M12	38	10	35	60	200	12	128.1	220
DFF 57	215	180	4	13.5	M12	38	10	35	70	250	15	136	243
DFF 67	215	180	4	13.5	M16	43	12	40	80	250	15	159.5	263
DFF 77	265	230	4	13.5	M16	53.5	14	50	100	300	16	200	332
DFF 87	300	250	5	17.5	M20	64	18	60	120	350	18	246.7	370.5
DFF 97	400	350	5	17.5	M20	74.5	20	70	140	450	22	285	453.5
DFF 107	400	350	5	17.5	M24	95	25	90	170	450	22	332.4	522.5
DFF 127	500	450	5	17.5	M24	106	28	100	210	550	25	382.6	630
DFF 157	600	550	6	22	M24	127	32	120	210	660	28	447	712

DF



型号 Type	d <sub>1</sub> (ke)	L <sub>1</sub>	l <sub>1</sub>	S <sub>1</sub>	C <sub>1</sub>	b <sub>1</sub>	G <sub>1</sub>
DF.S 37	16	115	40	M4	18	5	120
DF.S 47	19	115	40	M5	21.5	6	120
DF.S 57	19	120	40	M6	21.5	6	160
DF.S 67	19	120	40	M5	21.5	6	160
DF.S 77	24	140	50	M6	27	8	200
DF.S 87	28	180	60	M8	31	8	250
DF.S 97	38	220	80	M12	41	10	300
DF.S 107	42	270	110	M12	45	12	350
DF.S 127	55	297	110	M20	59	16	450
DF.S 157	70	374	140	M20	74.5	20	550

注：其它尺寸请参见DF系列  
Notes: refer other dimensions to DF series