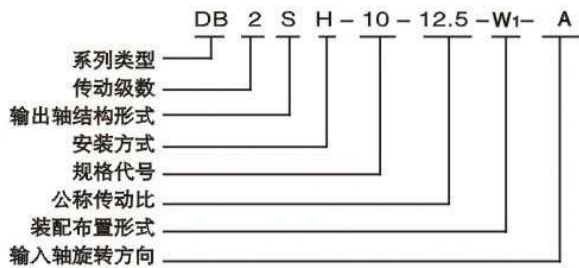


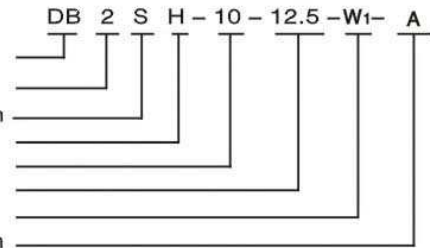



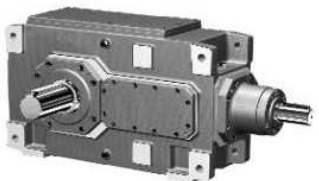
**DH.DB系列**

**型号表示方法 Type Designations**



Type  
Number of stages  
Output shaft design  
Mounting position  
Size  
Nominal ratio  
Design  
Direction of rotation of input shaft



HB	型号说明	上例说明	Explanation of types	Explanation of the above example
	系列类型: DH 平行轴 DB 直交轴	直交轴系列	Types: DH Helical DB Bevel-helical	Bevel-helical
	传动级数: 1 一级 2 二级 3 三级 4 四级	二级传动	Number of stages: 1 1-stage 2 2-stage 3 3-stage 4 4-stage	2-stage
	输出轴结构形式: S 实心轴 H 空心轴 D 带胀紧盘空心轴	实心轴输出	Output shaft design: S Solid shaft H Hollow shaft D Hollow shaft for shrink disk	Solid shaft output
	安装方式: H 卧式带底脚 M 卧式不带底脚 V 立式	卧式带底脚安装	Mounting positions: H Horizontal M Horizontal design without feet V Vertical	Horizontal
	规格代号: 1~22号机座	10号机座号	Size: size 1~22	Size10
	公称传动比: 公称传动比 <sub>in</sub> (见选型参数表)	公称传动比 <sub>in</sub> =12.5	Nominal ratio: Nominal ratio in (see selection table)	Nominal ratio <sub>in</sub> =12.5
	装配布置形式: W1、W2等	装配布置形式为W1	Design for assemble A,B,C,D,etc. (See page 82 ~ 84)	Design A (see page 82 ~ 84)
	输入轴旋转方向: 面对输入轴方向看为顺时针方向, 面对输出轴方向看为顺时针方向, DH省略	输入轴为顺时针 方向	Direction of input shaft rotates: clockwise face to input shaft, clockwise face to output shaft,DH omitted	Direction of rotation of input shaft is clockwise
	DH... 		DB... 	



**DH系列布置形式 DH series shaft arrangement 实心轴 Solid shaft**

DH2S W	A	B	C	D	E	F	G	H	I
DH2S L	A	B	C	D	E	F	G	H	I
DH3S W	A	B	C	D	E	F	G	H	I
DH3S L	A	B	C	D	E	F	G	H	I
DH4S W	A	B	C	D	E	F	G	H	I
DH4S L	A	B	C	D	E	F	G	H	I

HB

**带收缩盘空心轴 Hollow shaft with shrink disk**

DH2D W	A	B	C	D	E	F
DH2D L	A	B	C	D	E	F
DH3D W	A	B	C	D	E	F
DH3D L	A	B	C	D	E	F
DH4D W	A	B	C	D	E	F
DH4D L	A	B	C	D	E	F

**带键空心轴 Hollow shaft with key**

DH2H W	A	B	C	DH2A L	A	B	C
DH3H W	A	B	C	DH3A L	A	B	C
DH4H W	A	B	C	DH4A L	A	B	C



### 选型参数表 ServiceFactor

平行轴减速机  
额定输出扭矩  
类型DH1...DH2...DH3...DH4..  
规格 1...22

Helical Gear Reducer  
Nom.Output Torques  
Types DH 1...DH2...DH3...DH4..  
Sizes 1...22

HB

iN	额定输出扭矩 T <sub>2n</sub>										Nom output torques T <sub>2N</sub>										KN.m	
	规格					Sizes																
	1	2	3	4	5	6	7	8	9	10	11	12	13	14	15	16	17	18	19	20	21	22
1.25	0.79		2.6		7		13.3		21.5													
1.4	0.83		2.7		7.2		13.9		22.3													
1.6	0.87		2.9		7.5		14.2		23.6		40		63									
1.8	0.91		2.4		7.7		15.2		24.4		41.4		66.3									
2	0.93		2.5		8.2		15.5		25		42.7		68.2		121							
2.24	0.96		2.5		8.4		15.5		25		44		70.3		122							
2.5	1		2.6		8.4		15.5		25		44		72		110							
2.8	1		2.7		8.4		14.9		23.7		44		72		113		171					
3.15	1		2.7		8.4		15.2		24.5		41.9		68.4		116		173					
3.55	1		2.8		8.3		15.5		24.9		43.7		69.6		118		173					
4	1		2.8		8.4		15.5		25		44		70.8		122		173		245			
4.5	0.82		2.2		6.7		13.8		21.4		40		57.6		102		146		216			
5	0.78		2.1		6.3		12		20.5		33.7		54.5		88.8		124		174			
5.6	0.62		2		6		11.4		17.5		31.8		51.8		84.5		118		150			
6.3			3.5	6.3	10.5		19		31.5		55.5		86		143		195		292			
7.1			3.5	6.3	10.5		19		31.5		55.5		86		143	160	195	230	292	335	410	
8			3.5	6.3	10.5	13.5	19	24	31.5	39.5	55.5	69	86	107	143	160	195	230	292	335	410	458
9			3.5	6.3	10.5	13.5	19	24	31.5	39.5	55.5	69	86	107	143	160	195	230	292	335	410	458
10			3.5	6.3	10.5	13.5	19	24	31.5	39.5	55.5	69	86	107	143	160	195	230	292	335	410	458
11.2			3.5	6.3	10.5	13.5	19	24	31.5	39.5	55.5	69	86	107	143	160	195	230	292	335	410	458
12.5			3.5	6.3	10.5	13.5	19	24	31.5	39.5	55.5	69	86	107	143	160	195	230	292	335	410	458
14			3.5	6.3	10.5	13.5	19	24	31.5	39.5	55.5	69	86	107	143	160	195	230	292	335	410	458
16			3.5	6.3	10.5	13.5	19	24	31.5	39.5	55.5	69	86	107	143	160	195	230	292	335	410	458
18			3.5	6.3	10.5	13.5	19	24	31.5	39.5	55.5	69	86	107	143	160	195	230	292	335	410	458
20			3.5	6.3	10.5	13.5	19	24	31.5	39.5	55.5	69	86	107	143	160	195	230	292	335	410	458
22.4			3.5	6.3	10.2	13.5	18.6	24	31	39.5	54.5	69	88	107	153	160	200	230	300	335	420	458
25					11	13.5	20.5	24	34	39.5	60	69	88	107	153	173	200	240	300	345	420	470
28					11	13	20.5	23.5	34	38.9	60	67.8	88	109	153	173	200	240	300	345	420	470
31.5					11	14.5	20.5	25.5	34	43	60	75	88	109	153	173	200	240	300	345	420	470
35.5					11	14.5	20.5	25.5	34	43	60	75	88	109	153	173	200	240	300	345	420	470
40					11	14.5	20.5	25.5	34	43	60	75	88	109	153	173	200	240	300	345	420	470
45					11	14.5	20.5	25.5	34	43	60	75	88	109	153	173	200	240	300	345	420	470
50					11	14.5	20.5	25.5	34	43	60	75	88	109	153	173	200	240	300	345	420	470
56					11	14.5	20.5	25.5	34	43	60	75	88	109	153	173	200	240	300	345	420	470
63					11	14.5	20.5	25.5	34	43	60	75	88	109	153	173	200	240	300	345	420	470
71					11	14.5	20.5	25.5	34	43	60	75	88	109	153	173	200	240	300	345	420	470
80					11	14.5	20.5	25.5	34	43	60	75	88	109	153	173	200	240	300	345	420	470
90					11	14.5	20	25.5	33.5	43	60	75	88	109	153	173	200	240	290	345	410	470
100						14.5	20.5	25.5	34	43	60	75	88	109	153	173	200	226	300	335	420	465
112						14.1	20.5	25.5	34	42	60	75	88	109	153	173	200	240	300	345	420	470
125							20.5	25.5	34	43	60	75	88	109	153	173	200	240	300	345	420	470
140							20.5	25.5	34	43	60	75	88	109	153	173	200	240	300	345	420	470
160							20.5	25.5	34	43	60	75	88	109	153	173	200	240	300	345	420	470
180							20.5	25.5	34	43	60	75	88	109	153	173	200	240	300	345	420	470
200							20.5	25.5	34	43	60	75	88	109	153	173	200	240	300	345	420	470
224							20.5	25.5	34	43	60	75	88	109	153	173	200	240	300	345	420	470
250							20.5	25.5	34	43	60	75	88	109	153	173	200	240	300	345	420	470
280							20.5	25.5	34	43	60	75	88	109	153	173	200	240	300	345	420	470
315							20.5	25.5	34	43	60	75	88	109	153	173	200	240	300	345	420	470
355							19.6	25.5	33	43	59	75	88	109	140	173	192	240	290	345	410	470
400								25.5		43		75		109		158		223		335		465
450								24.8		41.6		74		109								



**选型参数表 Selection table**

平行轴减速机  
实际传动比  
类型 DH1...DH2...DH3...DH4  
规格 1...13

Helical Gear Reducer  
Actual Ratios  
Type DH1...DH2...DH3...DH4  
Sizes 1...13

HB

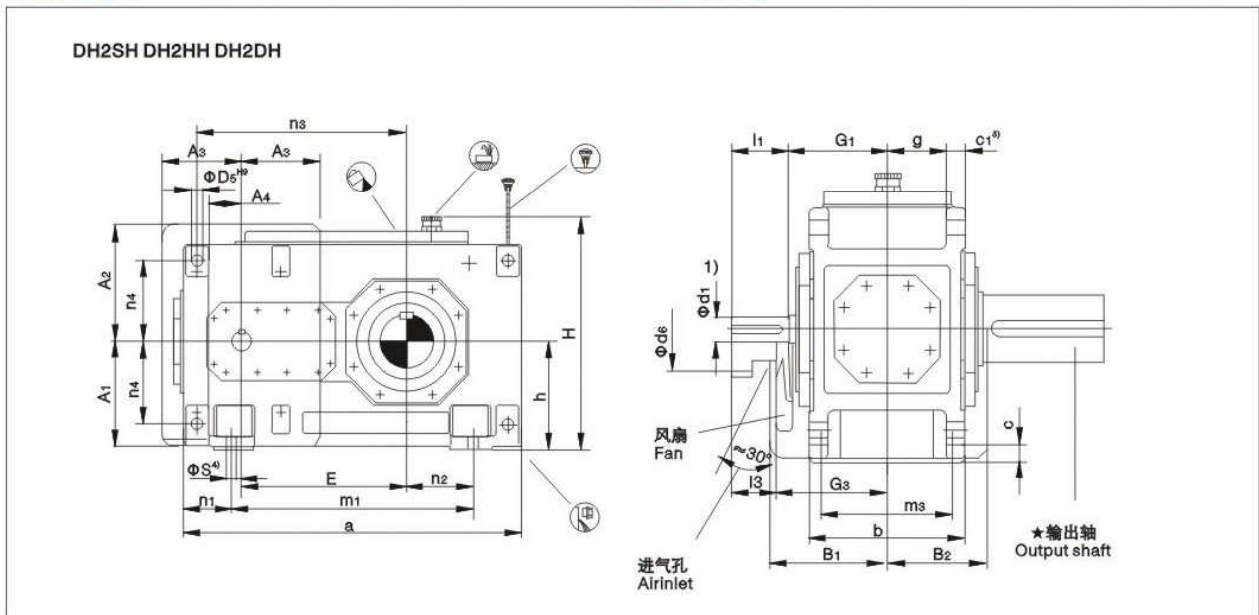
i <sub>n</sub>	实际传动比						Actual ratios i						
	规格						Size						
	1	2	3	4	5	6	7	8	9	10	11	12	13
1.25	1.250	-	1.243	-	1.256	-	1.263	-	1.27	-	-	-	-
1.4	1.415	-	1.371	-	1.378	-	1.389	-	1.400	-	-	-	-
1.6	1.605	-	1.594	-	1.588	-	1.606	-	1.625	-	1.636	-	1.588
1.8	1.829	-	1.829	-	1.839	-	1.774	-	1.800	-	1.806	-	1.839
2.0	2.000	-	2.000	-	2.034	-	1.966	-	2.000	-	2.000	-	2.034
2.24	2.194	-	2.194	-	2.259	-	2.308	-	2.231	-	2.222	-	2.259
2.5	2.536	-	2.536	-	2.520	-	2.583	-	2.500	-	2.480	-	2.520
2.8	2.808	-	2.808	-	2.826	-	2.800	-	2.741	-	2.783	-	2.826
3.15	3.125	-	3.125	-	3.190	-	3.130	-	3.208	-	3.080	-	3.208
3.55	3.500	-	3.500	-	3.591	-	3.524	-	3.591	-	3.478	-	3.591
4.0	3.950	-	3.950	-	4.050	-	4.000	-	4.050	-	3.905	-	4.050
4.5	4.476	-	4.435	-	4.619	-	4.400	-	4.381	-	4.421	-	4.619
5.0	5.053	-	4.952	-	4.900	-	4.905	-	4.947	-	5.150	-	4.900
5.6	5.571	-	5.579	-	5.556	-	5.526	-	5.684	-	5.474	-	5.556
6.3	-	-	6.232	6.319	6.286	-	6.088	-	6.26	-	6.246	-	6.410
7.1	-	-	7.099	6.844	7.213	-	7.048	-	7.247	-	6.900	-	7.100
8.0	-	-	7.765	7.778	7.889	7.792	7.799	7.676	8.018	7.848	7.644	7.941	7.889
9.0	-	-	8.516	8.485	8.652	8.940	8.660	8.887	8.904	9.085	8.974	8.772	8.799
10	-	-	9.845	9.722	10.002	9.778	9.660	9.833	9.932	10.053	10.046	9.718	9.861
11.2	-	-	10.900	10.694	11.075	10.724	10.648	10.920	11.138	11.163	10.889	11.410	10.811
12.5	-	-	12.132	12.444	12.326	12.397	11.807	12.180	12.574	12.452	12.174	12.773	12.655
14	-	-	13.588	13.854	13.806	13.726	13.939	13.426	14.152	13.964	13.704	13.844	14.164
16	-	-	15.335	15.556	15.581	15.278	15.717	14.887	15.962	15.765	15.556	15.478	15.975
18	-	-	17.378	17.602	17.493	17.111	17.598	17.576	18.204	17.743	17.111	17.423	17.280
20	-	-	19.616	19.444	19.534	19.311	19.742	19.817	19.312	20.012	19.074	19.778	19.515
22.4	-	-	21.630	22.037	22.006	21.681	20.982	22.189	21.895	22.824	21.491	21.756	22.020
25	-	-	-	-	25.011	24.212	25.54	24.892	25.439	24.212	24.706	24.251	25.372
28	-	-	-	-	28.490	27.275	27.661	26.456	29.187	27.451	28.602	27.325	29.373
31.5	-	-	-	-	31.161	30.999	31.433	32.202	31.924	31.894	31.648	31.412	32.501
35.5	-	-	-	-	34.177	35.312	34.291	34.877	35.013	36.593	35.144	36.366	36.092
40	-	-	-	-	39.508	38.622	39.292	39.633	40.474	40.024	39.200	40.238	40.257
45	-	-	-	-	43.745	42.360	43.221	43.236	44.816	43.897	43.210	44.683	45.147
50	-	-	-	-	48.689	48.967	50.293	49.542	49.881	50.744	47.911	49.840	50.968
56	-	-	-	-	54.532	54.220	55.991	54.496	55.866	56.187	56.566	54.938	57.365
63	-	-	-	-	61.543	60.347	62.867	63.413	63.049	62.537	63.778	60.916	64.699
71	-	-	-	-	69.742	67.589	71.139	70.597	70.787	70.041	71.414	71.919	73.789
80	-	-	-	-	78.723	76.279	78.583	79.267	79.049	79.046	80.111	81.089	78.278
90	-	-	-	-	86.806	86.440	89.061	89.696	89.050	88.748	85.146	90.798	88.750
100	-	-	-	-	-	97.572	101.554	99.083	101.210	99.106	103.639	101.856	103.114
112	-	-	-	-	-	107.590	115.256	112.294	115.290	111.645	112.249	108.257	118.306
125	-	-	-	-	-	-	125.733	128.046	126.098	126.89	127.556	131.769	129.398
140	-	-	-	-	-	-	143.985	145.322	138.301	144.542	139.152	142.716	141.920
160	-	-	-	-	-	-	158.251	158.533	159.874	158.093	159.444	162.178	164.058
180	-	-	-	-	-	-	174.630	181.546	177.022	173.392	175.389	176.921	181.654
200	-	-	-	-	-	-	193.629	199.533	197.028	200.439	204.089	202.722	202.184
224	-	-	-	-	-	-	228.606	220.185	220.671	221.938	227.208	222.994	226.446
250	-	-	-	-	-	-	257.753	244.141	249.043	247.020	255.111	259.484	255.560
280	-	-	-	-	-	-	288.615	288.242	282.219	276.663	288.678	288.879	286.925
315	-	-	-	-	-	-	305.352	324.993	318.563	312.234	318.889	324.356	320.413
355	-	-	-	-	-	-	344.112	363.906	351.273	353.827	361.407	367.034	360.951
400	-	-	-	-	-	-	-	385.010	-	399.393	-	405.444	-
450	-	-	-	-	-	-	-	433.881	-	440.402	-	459.504	-



外形安装尺寸 Mounting dimension sheets—overview

平行轴减速机  
两级传动  
卧式安装  
类型DH2.H  
规格3...12

Helical Gear Reducer  
Two Stage  
Horizontal  
Type DH2.H  
Size3...12

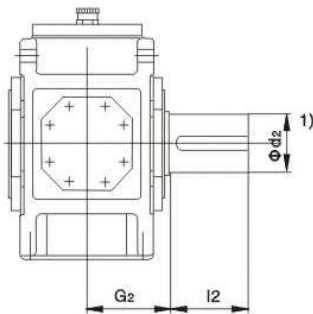


HB

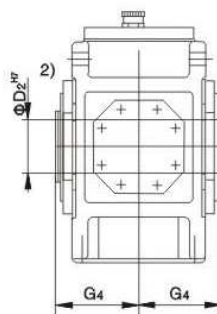
★ 输出轴

★Output shaft

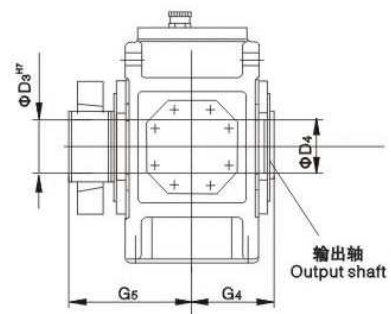
DH2SH  
实心轴  
Solid shaft



DH2HH  
空心轴  
Hollow shaft



DH2DH  
带胀紧盘的空心轴  
Hollow shaft for shrink disk



- 1)  $m6 \leq \Phi 100$   $n6 > \Phi 100$
- 2) 键槽GB/T 1095-1979
- 3) 扭力支撑位于工作机侧
- 4) 在安装基础螺栓前, 应先拆下风扇罩

- 1)  $m6 \leq \Phi 100$   $n6 > \Phi 100$
- 2) Keyway GB/T 1095-1979
- 3) Torque support on driven machine side
- 4) Remove air guide cover before fitting the foundation bolts



**外形安装尺寸 Mounting dimension sheets-overview**

平行轴减速机  
两级传动  
卧式安装  
类型DH2.H  
规格3...12

Helical Gear Reducer  
Two Stage  
Horizontal  
Type DH2.H  
Size3...12

HB

规格 Size	尺寸mm Dimensions in mm												G <sub>1</sub>	G <sub>3</sub>
	输入轴 Input shaft													
	IN=6.3-11.2			IN=8-14			IN=12.5-22.4			IN=16-28				
	d <sub>1</sub> (1)	l <sub>1</sub>	l <sub>3</sub>	d <sub>1</sub> (1)	l <sub>1</sub>	l <sub>3</sub>	d <sub>1</sub> (1)	l <sub>1</sub>	l <sub>3</sub>	d <sub>1</sub> (1)	l <sub>1</sub>	l <sub>3</sub>		
3	35	60	-				28	50	-				135	-
4	45	100	80				32	80	60				170	190
5	50	100	80				38	80	60				195	215
6				50	100	80				38	80	60	195	215
7	60	135	105				50	110	80				210	240
8				60	135	105				50	110	80	210	240
9	75	140	110				60	140	110				240	270
10				75	140	110				60	140	110	240	270
11	90	165	130				70	140	105				275	310
12				90	165	130				70	140	105	275	310

规格 Size	尺寸mm Dimensions in mm											
	减速机 Gear reducer											
	a	A <sub>1</sub>	A <sub>2</sub>	A <sub>3</sub>	A <sub>4</sub>	b	B <sub>1</sub>	B <sub>2</sub>	c	c <sub>1</sub>	D <sub>5</sub>	d <sub>6</sub>
3	450	-	-	-	-	190	-	-	22	24	18	-
4	565	195	225	150	30	215	205	158	28	30	24	136
5	640	225	260	175	55	255	230	177.5	28	30	24	150
6	720	225	260	175	55	255	230	177.5	28	30	24	150
7	785	272	305	210	70	300	255	210	35	36	28	200
8	890	272	305	210	70	300	255	210	35	36	28	200
9	925	312	355	240	100	370	285	245	40	45	36	200
10	1025	312	355	240	100	380	285	245	40	45	36	200
11	1105	372	420	285	135	430	325	285	50	54	40	210
12	1260	372	420	285	135	430	325	285	50	54	40	210

规格 Size	尺寸mm Dimensions in mm										
	减速机 Gear reducer										
	E	g	h	H	m <sub>1</sub>	m <sub>3</sub>	n <sub>1</sub>	n <sub>2</sub>	n <sub>3</sub>	n <sub>4</sub>	S
3	220	71	175	390	290	160	80	65	285	132.5	15
4	270	77.5	200	445	355	180	105	85	345	150	19
5	315	97.5	230	512	430	220	105	100	405	180	19
6	350	97.5	230	512	510	220	105	145	440	180	19
7	385	114	280	602	545	260	120	130	500	215	24
8	430	114	280	617	650	260	120	190	545	215	24
9	450	140	320	697	635	320	145	155	585	245	28
10	500	140	320	697	735	320	145	205	635	245	28
11	545	161	380	817	775	370	165	180	710	300	35
12	615	161	380	825	930	370	165	265	780	300	35

规格 Size	尺寸mm Dimensions in mm									润滑油 Lubrication (L)	重量 Weight (kg)
	输出轴 Output shaft										
	DH2SH			DH2HH		DH2DH					
	d <sub>2</sub> (1)	G <sub>2</sub>	l <sub>2</sub>	D <sub>2</sub> (2)	G <sub>4</sub>	D <sub>3</sub>	D <sub>4</sub>	G <sub>4</sub>	G <sub>5</sub>		
3	65	125	140	65	125	70	70	125	180	6	115
4	80	140	170	80	140	85	85	140	205	10	190
5	100	165	210	95	165	100	100	165	240	15	300
6	110	165	210	105	165	110	110	165	240	16	355
7	120	195	210	115	195	120	120	195	280	27	505
8	130	195	250	125	195	130	130	195	285	30	590
9	140	235	250	135	235	140	145	235	330	42	830
10	160	235	300	150	235	150	155	235	350	45	960
11	170	270	300	165	270	165	170	270	400	71	1335
12	180	270	300	180	270	180	185	270	405	76	1615